

Flow Cytometry Immunophenotyping Service

INTRODUCTION

- Specific panels are provided based on evaluation of clinical presentation and morphology of blood or marrow
- All studies are interpreted by a Hematopathologist
- Results are integrated into bone marrow or peripheral blood smear reports
- Individualized approach to diagnosis results in cost effective resource utilization

PANELS OFFERED

Lymphoproliferative Disorders (blood, bone marrow)

- Distinguishes LPD from reactive lymphocytosis
- Makes a specific diagnosis e.g., CLL, Mantle Cell, Hairy Cell Leukemia, Follicular Lymphoma, etc.

ZAP-70 analysis for CLL prognosis (blood, bone marrow)

- Increased expression associated with a poorer prognosis
- CD38 is part of the routine lymphoproliferative panel

Acute Leukemia Panel (blood, bone marrow)

- Distinguishes precursor B, T and myelogenous leukemia
- Cytoplasmic MPO, CD79a, and CD3 included for greater specificity

Myelodysplastic Syndrome

- Includes 8 parameters which can aid in diagnosing MDS

Paroxysmal Nocturnal Hemoglobinuria

- CD55 and CD59 (blood)

DNA Ploidy (blood, bone marrow, paraffin block)

- Helps distinguish partial from complete moles
- Hyperdiploidy in ALL associated with a more favorable prognosis
- Hypodiploidy in Multiple Myeloma is associated with a less favorable course

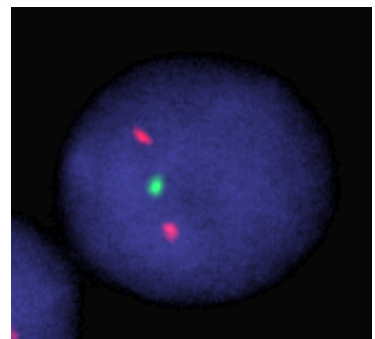
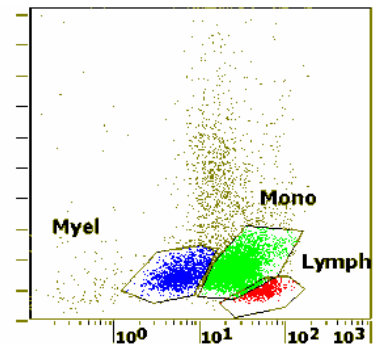
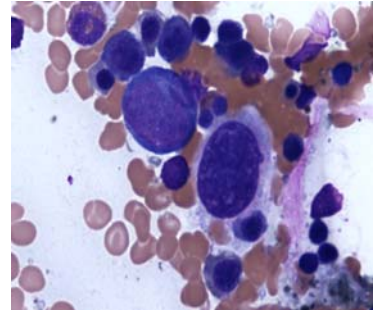
Stem Cell Enumeration

Set up schedule: 6 days a week, Monday to Saturday

SPECIMEN REQUIREMENTS – BLOOD OR MARROW

EDTA and ACD (5 ml whole blood tubes)

Transport at room temperature



Contact information:

Stephen Lee, M.D.

Department of Pathology and Laboratory Medicine
8700 Beverly Blvd. Suite 4711, Los Angeles, CA 90048
(310) 423-5471 Tel; (310) 423-0483 Fax

Diagnosis at the Speed of Right