

EGFR Tests for Lung Cancer

INTRODUCTION

- Increased activity at the EGFR receptor has been shown to occur in a variety of solid tumors including glioblastomas, non-cell lung carcinomas, many head/neck carcinomas, and carcinomas of colon, breast, prostate, stomach, and ovary
- EGFR amplification can be detected with immunohistochemistry and Fluorescent in situ hybridization
- EGFR copy number by FISH is considered a significant prognostic factor for survival in selected patients with pulmonary adenocarcinoma and can predict response to tyrosine inhibitor drugs such as Tarceva^R and Iressa^R
- EGFR mutations are detected with PCR and molecular tests

INDICATIONS

- Patients with bronchioloalveolar carcinoma of the lung
- Patients with Stage III or IV adenocarcinoma of the lung
- Other lung tumors, as requested by oncologists

EGFR TESTS AVAILABLE

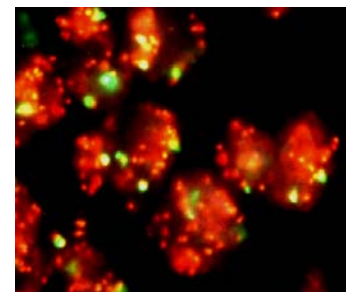
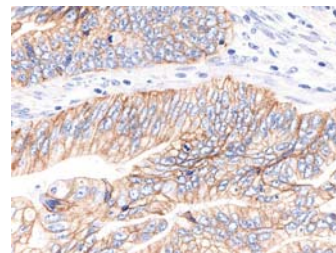
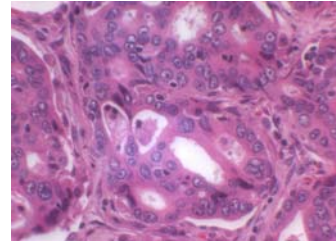
- Immunohistochemistry
- FISH
- Molecular test under development – **Coming soon!**

SPECIMEN REQUIREMENTS

- Routine paraffin blocks with representative tumor samples
- Formalin-fixed, 4-6 microns thick paraffin sections bake overnight

OTHER RELEVANT INFORMATION

- Results of EGFR tests to detect amplification and mutations need to be correlated with smoking status and sex



Contact information:

Department of Pathology and Laboratory Medicine
8700 Beverly Blvd. Suite 4711, Los Angeles, CA 90048
(310) 423-5471 Tel; (310) 423-0483 Fax

Diagnosis at the Speed of Right