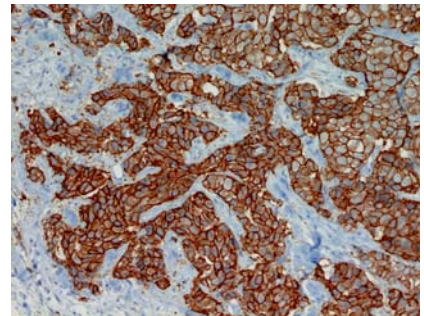
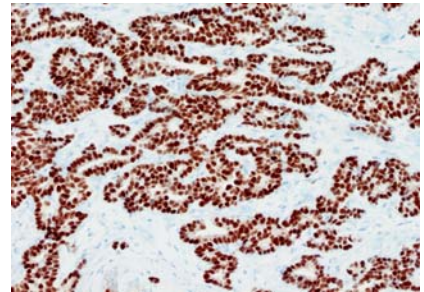


## Breast Cancer: Prognostic and Predictive Profile Testing

### INTRODUCTION

- Performs automated immunohistochemical detection of the following prognostic markers in breast cancer:
  - Estrogen receptor
  - Progesterone receptor
  - Her-2/neu (human epidermal growth factor receptor 2)
  - Ki67
- Evaluates Her-2/neu gene copy numbers using FISH
- Useful for determining behavior of tumor
- Predicts and guides response to therapy
- IHC evaluation is automated, accurate, and reproducible
- Integrated reports are provided



### INDICATIONS

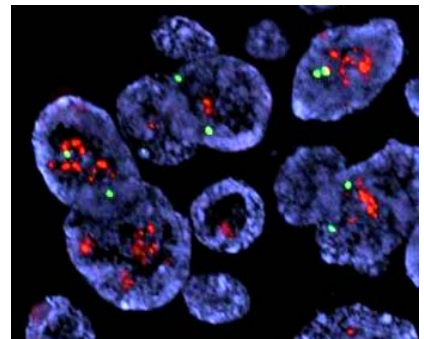
- Invasive breast cancer
- Ductal carcinoma in situ (only estrogen and progesterone receptor status is determined)

### SPECIMEN REQUIREMENTS

- Blocks or sections (5 micron thickness) of formalin-fixed paraffin-embedded invasive breast cancer or ductal carcinoma *in situ*

### CLINICAL SIGNIFICANCE

- This battery of markers not only provides prognostic information, but can be used to predict response to therapy
- The tests are recommended by the College of American Pathologists
- All accreditation and proficiency testing requirements to perform these tests are met
- Her-2/neu testing is performed in accordance with the 2007 ASCO/CAP guidelines



### Contact information:

Department of Pathology and Laboratory Medicine  
8700 Beverly Blvd. Suite 8709, Los Angeles, CA 90048  
(310) 423-6611 Tel; (310) 423-0122 Fax

*Diagnosis at the Speed of Right*